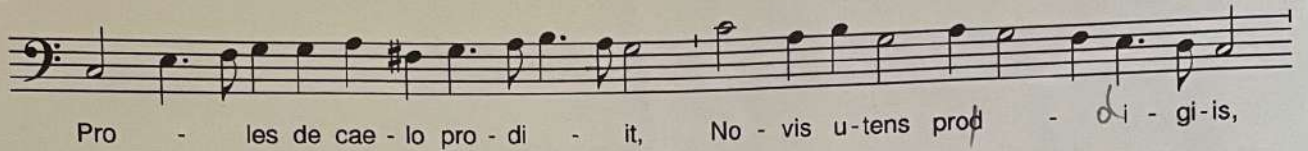


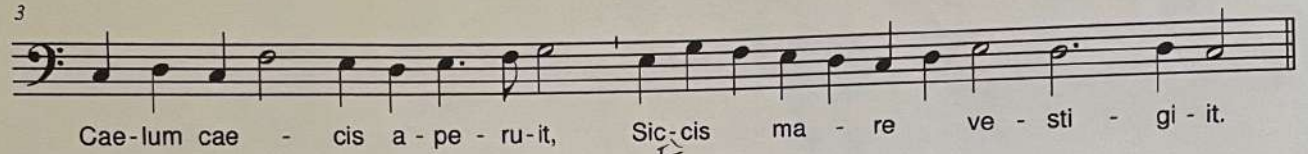
Pan la fête de
S. François
Place de l'hymne
tridanture

Hymnus

I

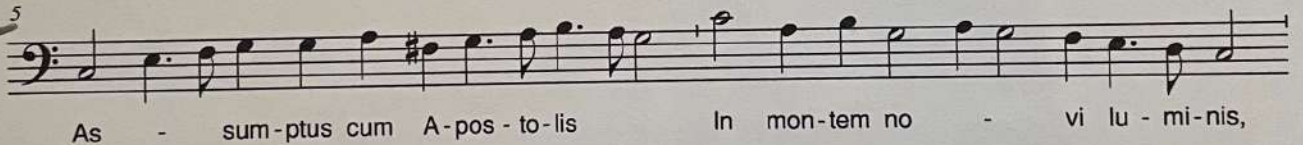


3

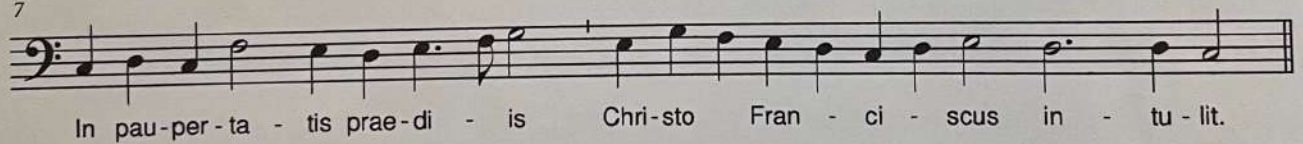


II Versus secundus

III⁵

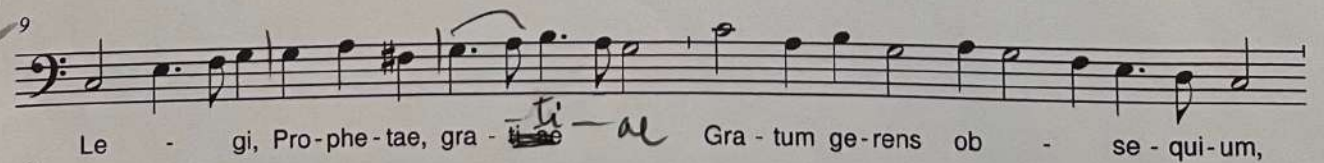


7

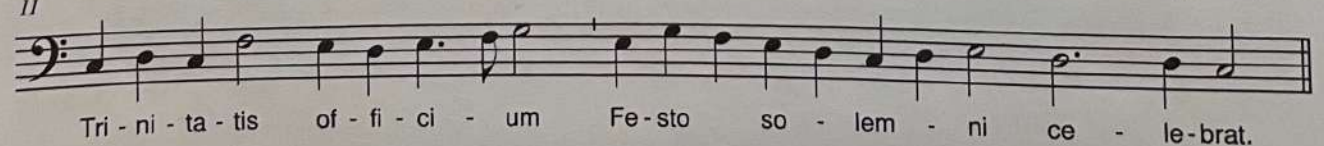


IV Versus Tertius

V⁹



11



VI Versus quintus
+ modulus

Modulus choristicus, pars acuta ad Diapason intensum.

53

[Do - - - - - mum, por - tam et tu - mu - lum,

This system contains measures 53 through 57. It features a treble clef with a common time signature (C). The melody begins with a whole rest in measure 53, followed by a half note G4 in measure 54, and continues with quarter and eighth notes in measures 55, 56, and 57. The lyrics are: [Do - - - - - mum, por - tam et tu - mu - lum,]. The bass line consists of a steady eighth-note accompaniment.

58

Pa - ter Fran - cis - ce, vi - si - ta Et E - vae

This system contains measures 58 through 62. The treble clef has a common time signature (C). The melody starts with a half note G4 in measure 58, followed by quarter notes in measures 59, 60, and 61, and ends with a quarter note G4 in measure 62. The lyrics are: Pa - ter Fran - cis - ce, vi - si - ta Et E - vae. The bass line continues with an eighth-note accompaniment.

63

pro - lem mi - se - ram A som - no mor - tis ex - ci - ta.]

This system contains measures 63 through 67. The treble clef has a common time signature (C). The melody begins with a quarter note G4 in measure 63, followed by quarter notes in measures 64, 65, and 66, and ends with a quarter note G4 in measure 67. The lyrics are: pro - lem mi - se - ram A som - no mor - tis ex - ci - ta.]. The bass line continues with an eighth-note accompaniment. The system concludes with a double bar line and repeat signs in both staves.

Annuaire che contiene tutto quello, che deve far un organista per rispondere al choro tutto l'anno, Venice, 1645.